

Głos solowy

**Jerzy BAUER**

# **WARIACJE OBERKOWE**

na wiolonczelę i orkiestrę

(dla początkujących wiolonczelistów  
na pierwszy kontakt z orkiestrą)

(time ca 7' -8')

# Wariacje oberkowe

na wiolonczelę i orkiestrę

Jerzy Bauer

ded. synowi Andrzejowi

Cello solo

$\text{♩} = \text{ca } 55$

*mp*

5

*mf*

9

*f*

pizz. alla ghitarra

13

solo meno mosso

arco

*f*

*p*

17

*f*

*p*

*f*

*p*

21

*p*

*f*

*p*

25

*f*

*p*

*f*

*p*

29

*f*

*p*

in tempo

$\text{♩} = \text{ca } 65$

piu vivo

*f*

3

33 3 38 2

*mfew. f*

40 42 2

*mfew. f*

45 46 2

*mfew. f*

50 4 2

*mfew. f*

57 2 2

*mfew. f*

61 64 2

*mfew. f*

67 2

*mfew. f*

73 76 2

*mfew. f*


78

*mf*

4

4

2

82 


86

*f*

2

91

Measure 91 in the bass clef. The notation starts with a whole rest. This is followed by a half note G2, a half note A2, and a half note B2. Then, there is a half note C3, a half note D3, and a half note E3. Finally, there is a half note F3, a half note G3, and a half note A3.

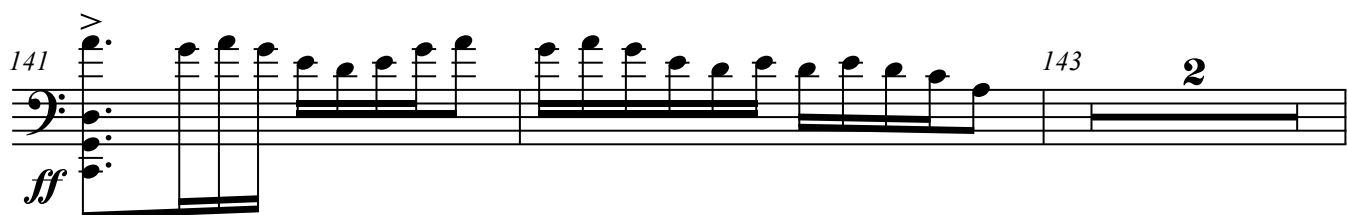
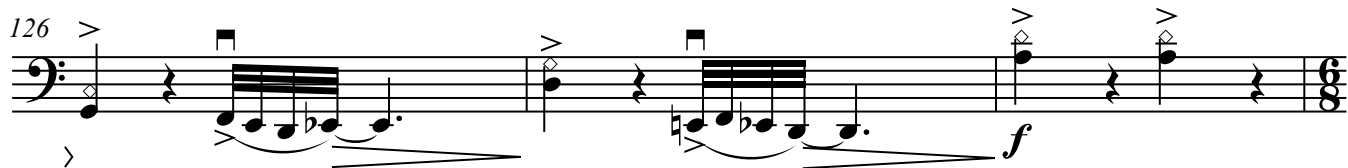
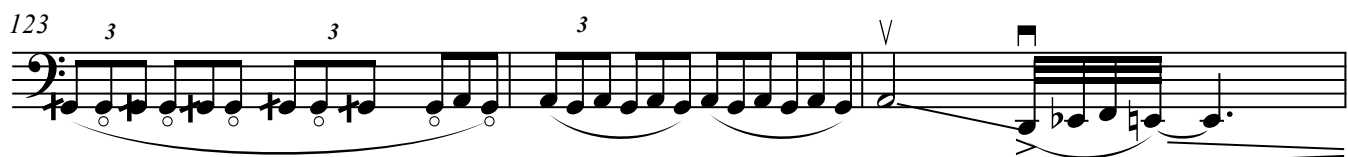
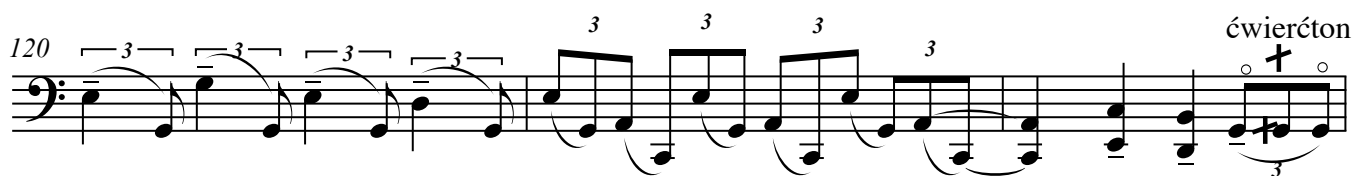
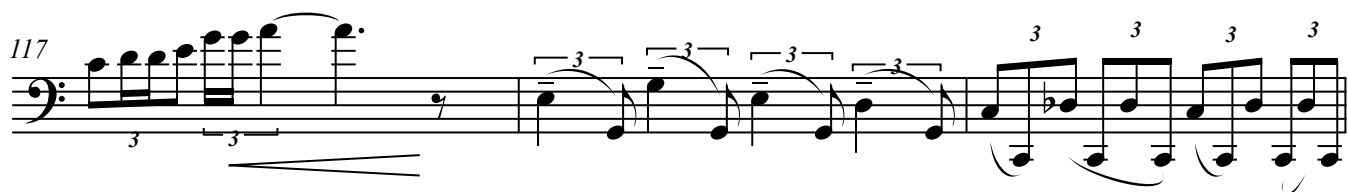
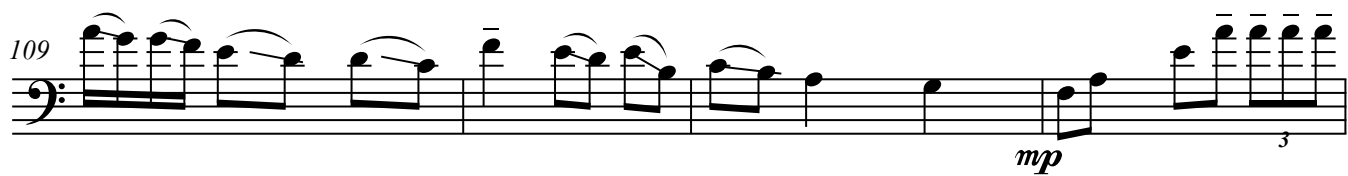
95 

98 

101 

105

*mf*



145 6

*f*

149

153 154 2

*f*

158

162

166

*ff*

169

*sfz*