

Głos

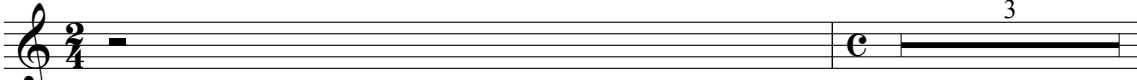
Preludia i taniec polski (1976)

na skrzypce i fortepian

Jerzy Bauer

$\bullet = \text{ca } 90$ I Preludio

Violino



3

5 *sul pont.*

V-no

mp



9

V-no



13

V-no



17

V-no



21

V-no



25

V-no



V-no 28

V-no 31

V-no 33

V-no 36

mf

V-no 39

mf

V-no 42

*inquieto
sul tasto*

mf

V-no 44

mf

V-no 47

V-no 50

V-no 54

V-no 58

V-no 61

V-no 64

V-no 67

V-no 70

V-no 73

V-no 76

V-no 79

V-no 81

V-no 84

V-no 85

V-no 87

V-no 90

V-no 92

94

V-no

97

V-no

$\text{♩} = \text{ca } 55$ II Preludio

asincronico

mp

2

101

V-no

102

V-no

104

V-no

106

V-no

$\text{♩} = \text{ca } 90$ III Preludio

mf

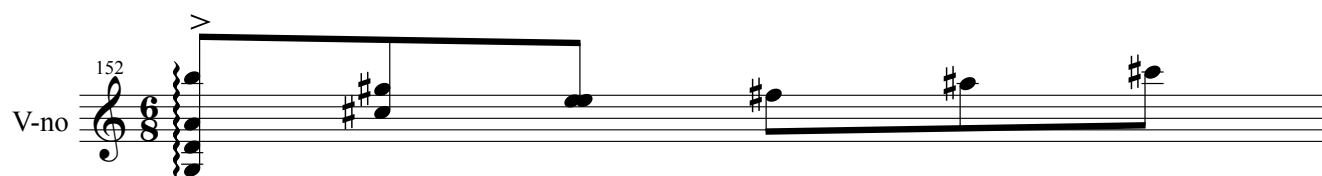
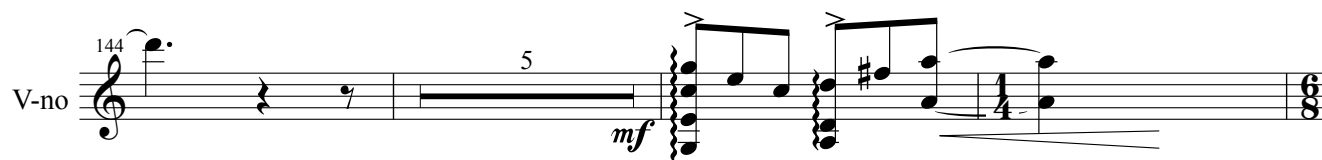
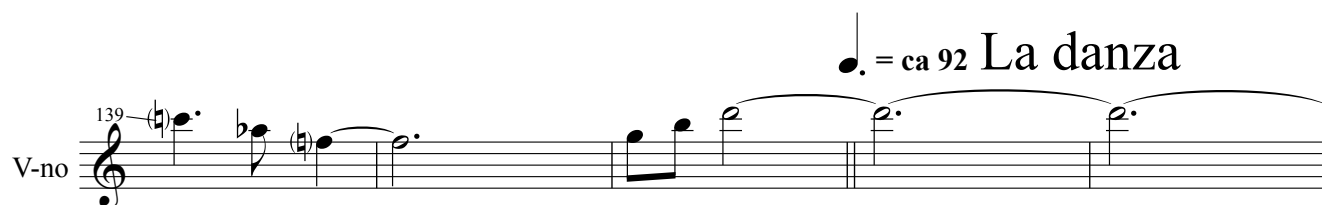
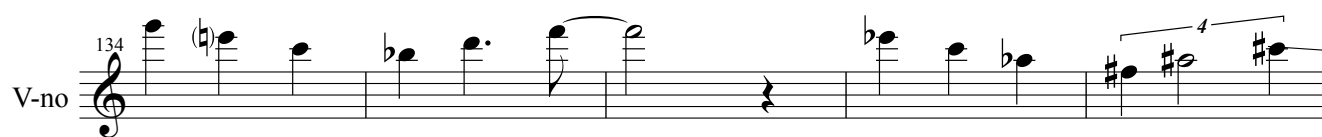
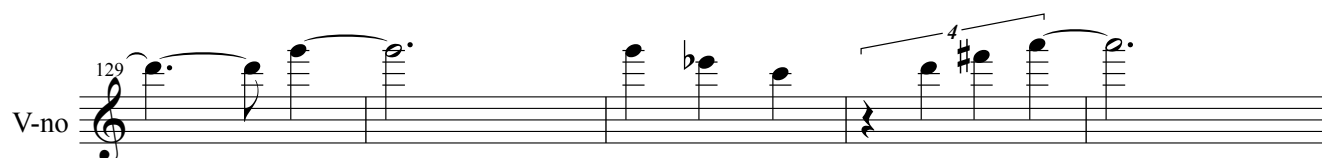
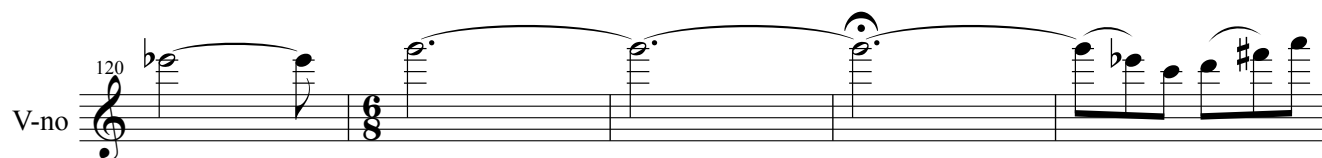
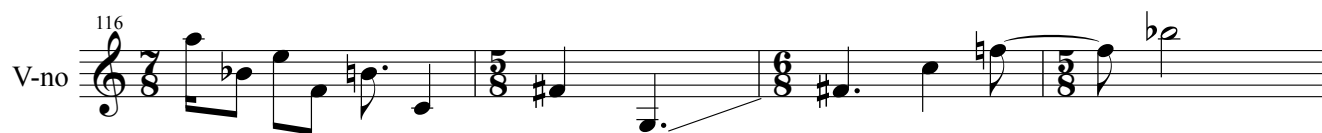
6/16


110

V-no

113

V-no



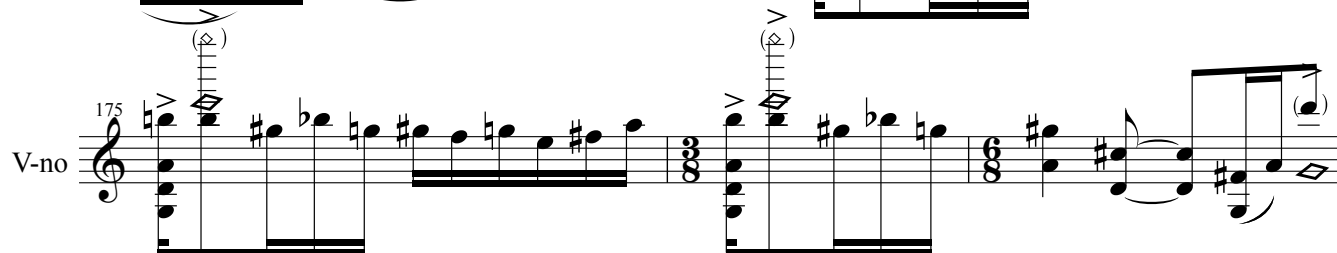
V-no 153 

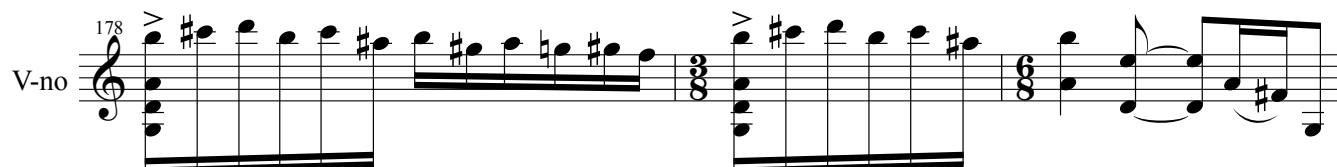
V-no 165 

V-no 168 

V-no 171 

V-no 173 

V-no 175 

V-no 178 

V-no 181 

V-no 183

V-no 185

V-no 187 *fishio (świst)*

V-no 190

V-no 194

V-no 197

V-no 199

V-no 200

V-no

201

V-no

203

V-no

205

V-no

208

mp

f

The image displays a musical score for a Violoncello (V-no) part, spanning measures 201 to 208. The notation is written on a single staff with a treble clef. The key signature consists of one flat (B-flat), and the time signature is 4/4. The score includes various musical notations such as eighth notes, sixteenth notes, and triplets. Dynamic markings include *mp* (mezzo-piano) and *f* (forte). There are also articulation marks like accents (>) and slurs. The score is divided into four systems, each starting with a measure number (201, 203, 205, 208) and the instrument label 'V-no'.