

Głos wiolonczeli

Jerzy Bauer
ded. Marcinowi Zdunikowi

OSCYLACJE


na wiolonczelę i fortepian


ca 7'45"

na wiolonczelę i fortepian

Jerzy Bauer

dedykuję Marcinowi Zdunikowi

tempo  = ca 140

V-cello  *mp* (con indifferenza)

V-c

(Bartók pizz.)

mf


(con indifferenza)

The musical score for Violoncello (V-c) consists of two staves. The first staff begins with a treble clef, a common time signature (C), and a forte dynamic marking (*mf*). It contains six measures of music, each featuring a single eighth note followed by a rest. Above each note is a circled 'o' indicating Bartók pizzicato. Below each note is a downward-pointing wedge symbol. The second staff begins with a bass clef, a 4/4 time signature, and continues with four more measures of similar notation. The tempo/mood instruction '(con indifferenza)' is written below the first staff.

10

V-c

Measures 10-16 of the V-c part. The staff is in 6/4 time. Measure 10 starts with a whole note G2. Measure 11 has a whole note G2 with a 'V' and a 'c' above it. Measure 12 has a whole note G2 with a 'V' and a 'c' above it. Measure 13 has a whole note G2 with a 'V' and a 'c' above it. Measure 14 is a whole rest. Measure 15 has a whole note G2 with a 'V' and a 'c' above it. Measure 16 has a whole note G2 with a 'V' and a 'c' above it.

V-c 

[illegible]

22 *mf*

25

28 *mf* gliss. 3

31 3

34 3

37 *impetuoso* *f* 3 3

40 *feroce* *ff* 3 3 *pizz.*

43 *arco* *f*

V-c 46 *mp* *pp*

V-c 49 *f* *ff*

V-c 52

V-c (sottolineare) 55 *p*

V-c 58 *mp* *mf*

V-c 61 *f* 5

V-c 64

V-c 66 *mp* flag.

69

V-c

72

V-c

75

V-c

79

V-c

82

V-c

85

V-c

88

V-c

91

V-c

feroce

94

V-c

97

V-c

pizz.

ff

mf

3

100

V-c

6/4

103

V-c

mf

106

V-c

109

V-c

112

V-c

115

V-c

3

5/4

118 *meno mosso* (*arco* (♩. = ca 90))

V-c *mf* *meno mosso (sottolineare)* *f*

121

V-c

(♩ = ca 140)
124 *a tempo*

V-c *mp*

127 *senza precise sincro*

V-c *pp*

131 *voci della natura sul ponticello*

V-c *mp*

135 *sul C*

V-c *mf* *f* *ff*

138 *ord.* *quasi gliss.* *pizz.* *arco* *f*

V-c

140 *sul G*

V-c *mp* *f*

- 7 -

142

V-c

144

V-c

mp

148

V-c

152

V-c

pp *ppp*

157 *feroce*

V-c

ff

160

V-c

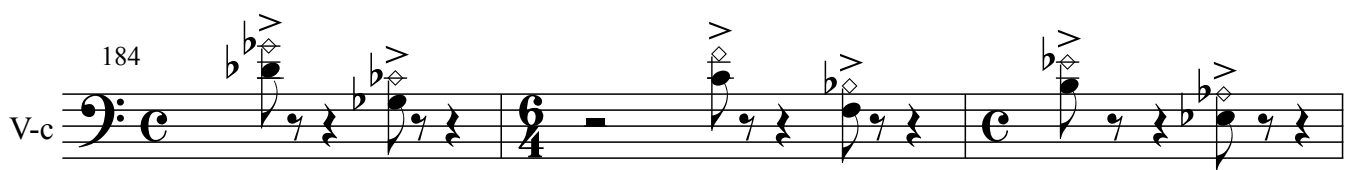
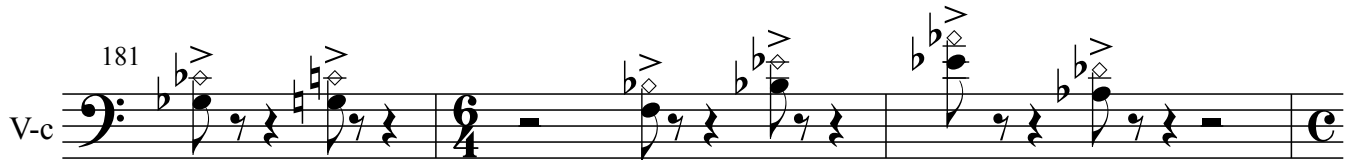
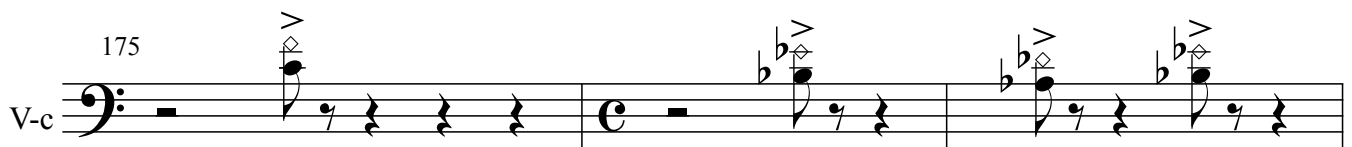
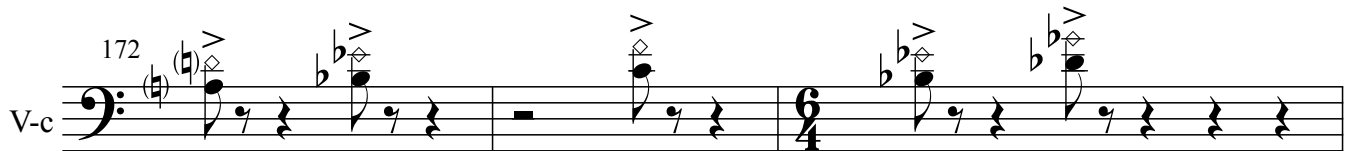
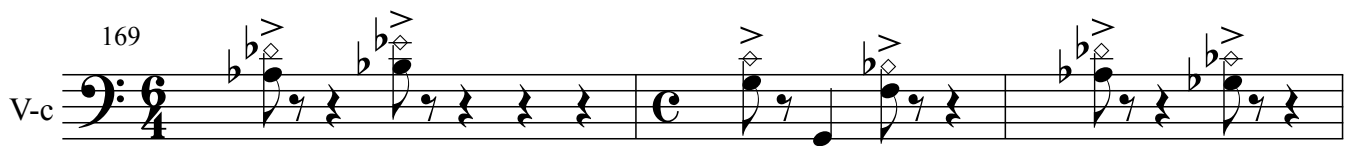
163

V-c

166

V-c

mp



V-c 193

V-c 196

p

V-c 199

V-c 202

2

V-c 208

ff

V-c 211

V-c 214

V-c 217

3

220

V-c

222

V-c

ff

lunga

a tempo

pizz.

mf

225

V-c

arco

senza vibr.

p

228

V-c

5

231

V-c

234

V-c

pizz.

mf

3

3

3

ff

(Bartók pizz.)