

Jerzy Bauer

ZDERZENIA Z BALLADĄ

na trąbkę i organy

(Z okazji Jubileuszowego Roku Chopinowskiego 2010)

Warszawa 2010

Redakcja i grafika nutowa: Krzysztof Grzeszczak

ZDERZENIA Z BALLADĄ

na trąbkę i organy

(Z okazji Jubileuszowego Roku Chopinowskiego 2010)

Jerzy Bauer

Tromba in B

$\text{♩} = 60$

mf

Organo

mp (come eco)

Tr.

$\text{♩} = 75$

f

$\text{♩} = 90$

f

Org.

f

mf

Tr.

f

Org.

f

4
9

Tr.

Org.

Measures 4-9. The system includes a Trumpet (Tr.) staff, an Organ (Org.) grand staff (treble and bass), and a separate bass line. Measure 4 is in 2/4 time, and measure 5 changes to 6/4. The Organ part features chords in the right hand and single notes in the left hand. The Trumpet part has eighth notes with accents. The bass line has a melodic line starting in measure 5.

11

Tr.

Org.

Measures 11-12. The system includes a Trumpet (Tr.) staff, an Organ (Org.) grand staff, and a separate bass line. Measure 11 is in 2/4 time, and measure 12 changes to 6/4. The Organ part has chords in the right hand and single notes in the left hand. The Trumpet part has a whole note in measure 11 and a half note in measure 12. The bass line has a melodic line.

13

Tr.

Org.

Measures 13-14. The system includes a Trumpet (Tr.) staff, an Organ (Org.) grand staff, and a separate bass line. Measure 13 is in 2/4 time, and measure 14 changes to 6/4. The Organ part has chords in the right hand and single notes in the left hand. The Trumpet part has a whole note in measure 13 and a whole note in measure 14. The bass line has a melodic line.

14

Tr.

Org.

14

16

Tr.

Org.

ff

16

17

Tr.

Org.

cantabile

ff

Gloss.

17

6
20

Tr.

Org.

sforz

Glissando

23

Tr.

Org.

mf

28

Tr.

Org.

cantabile

Glissando

33

Tr.

Org.

f

33

34

35

36

Tr.

Org.

36

37

38

39

40

Tr.

Org.

40

41

42

8
45

Tr.

Org.

f

Measures 45-48. The Tr. part has a single note. The Org. part features a complex texture with triplets and a 3/4 time signature change.

49

Tr.

f *ff*

Org.

Measures 49-51. The Tr. part has a sixteenth-note triplet and a fortissimo section. The Org. part has a continuous sixteenth-note pattern.

52

Tr.

f

Org.

Measures 52-55. The Tr. part has a sixteenth-note triplet and a fortissimo section. The Org. part has a continuous sixteenth-note pattern.

56

Tr.

Org.

59

Tr.

Org.

mf

64

Tr.

Org.

mf

10
68

Tr.

Org.

f

68

69

70

71

Tr.

Org.

mf

71

72

73

74

75

Tr.

Org.

mf

ff

f

ff

75

76

77

78

80

Tr.

Org.

(I)

(II)

84

Tr.

Org.

88

Tr.

Org.

(I)

12
92

Tr.

Org.

mf

mp

5

2 2 5

96

Tr.

Org.

mf

7

7

100

Tr.

Org.

f

f

3/4

3/4

103

Tr.

Org.

105

Tr.

Org.

107

Tr.

Org.

meno mosso

mp

14

110

Tr.

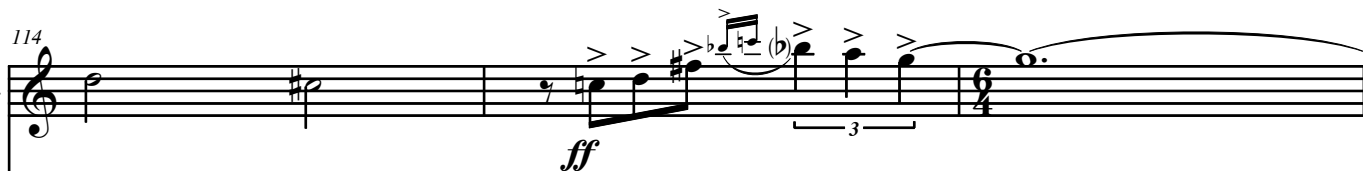


Org.

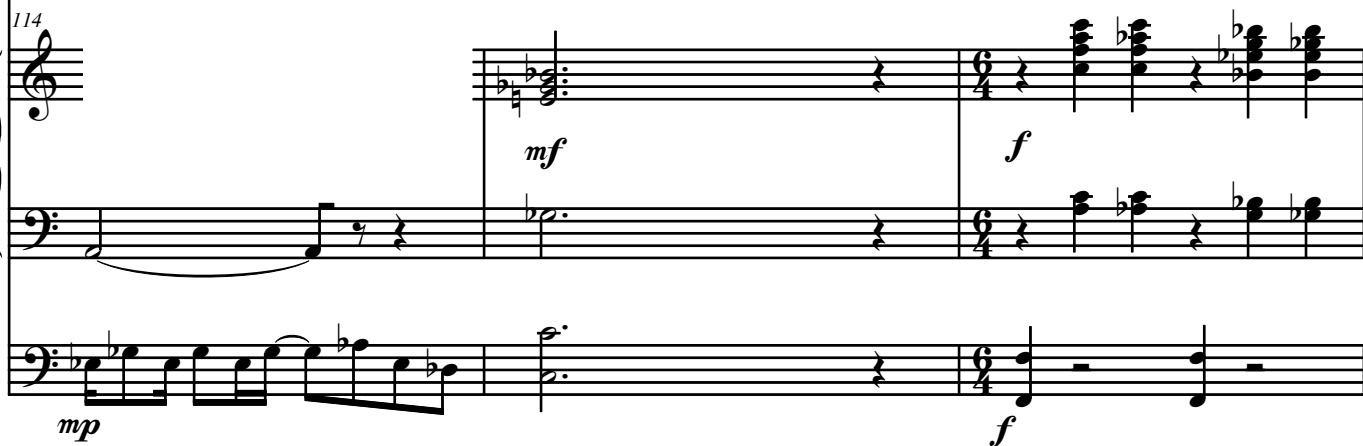


114

Tr.



Org.



117

Tr.



Org.

